



Carenado®

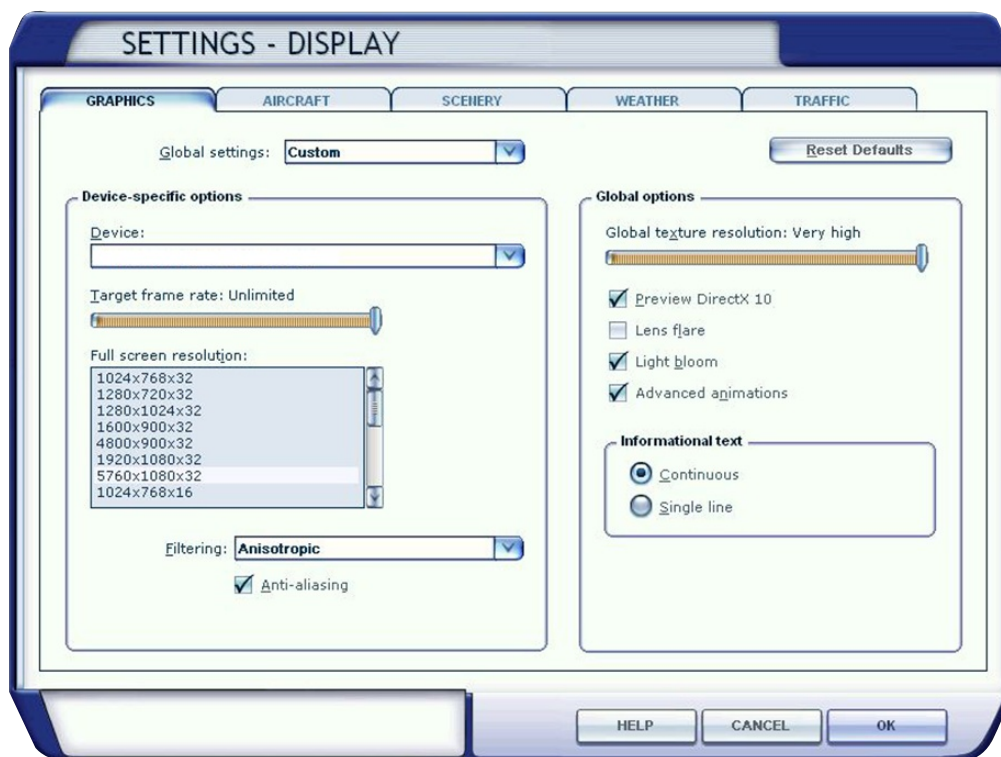
RECOMMENDED DISPLAY AND REALISM FSX SETTINGS FOR A CARENADO AIRCRAFT

This plane was developed for maximum realism. Many details were included in both 3D model and textures. Real information was also used to make this aircraft behave like the real one. Therefore, in order to achieve the best experience with this aircraft we recommend the following settings:

DISPLAY

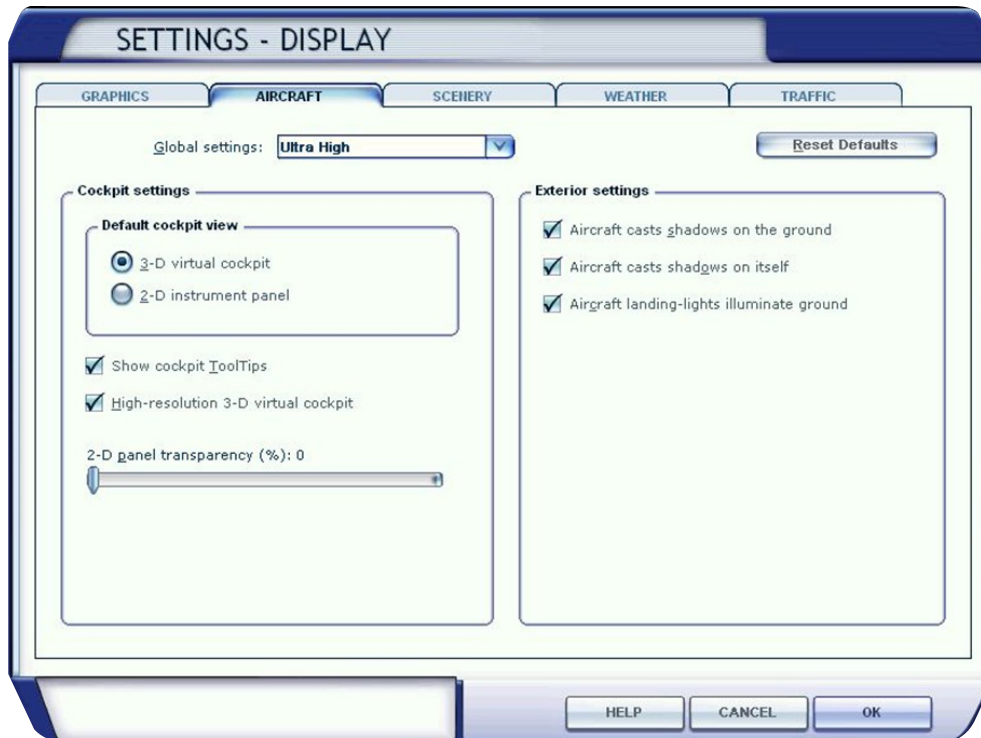
Setting - Display - Graphics

The most important setting of this menu is the "Global texture resolution" which should be set to Very high as is shown in the picture below.



SETTING - DISPLAY - AIRCRAFT

The most important setting of this menu is the "Global settings" which should be set to Ultra High as is shown in the picture below.



REALISM

This aircraft was developed with real data of the real aircraft. Information about performance, behavior, geometry, tolerances and capacities are real. Therefore, to get a real experience about flying it, all the realism setting should be set as is shown in the picture below.

